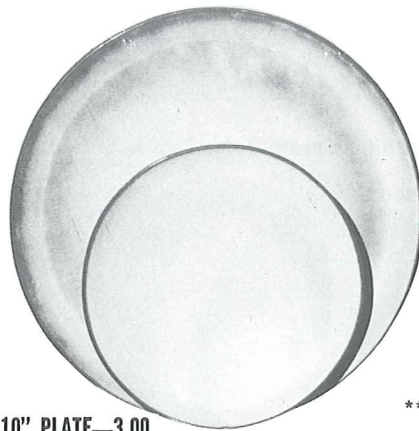


*4K—BUTTER DISH—3.50



6F—10" PLATE—3.00

6G—7" PLATE—1.50



*6B—SUGAR WITH LID—2.50



*6A—9 OZ. CREAMER—2.00



*6V—2½ QT. BAKER—6.50



**6C—CUP—2.00

6E—5" WELLED SAUCER—1.25



*6H—SALT & PEPPER—2.50



*5LC—6 OZ. JUICE—1.50



*5L—12 OZ. TUMBLER—2.00



*6VS—1½ QT. BAKER—5.00



*6T—6 CUP TEAPOT—5.00



*81—1 QT. PITCHER—3.00



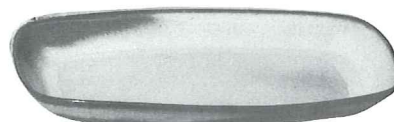
*80—2 QT. PITCHER—5.00



*6J—2 CUP TEAPOT—3.50



*6U—18 OZ. BAKER FOR TWO—3.50
A COVERED CANDY DISH



*5QS—13" STEAK PLATE (SHALLOW PLATTER)—3.00

*6P—11" STEAK PLATE—2.50

*5PS—9" TRAY—2.00

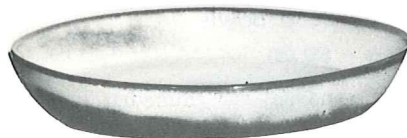


**6X—14 OZ. CHILI SOUP—1.50

**6XS—10 OZ. FRUIT—1.25



*6S—TWO SPOUT GRAVY—3.00



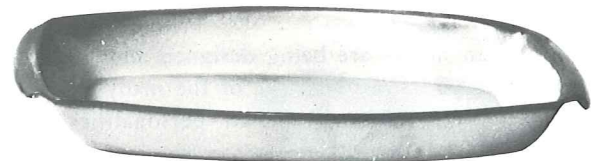
*91—10" BAKING DISH—3.00



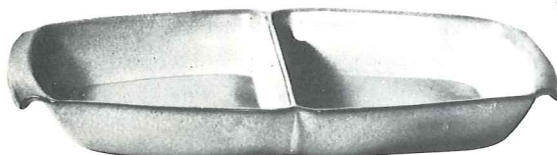
*BP—6 OZ. BEAN POT
OR CUSTARD—1.00



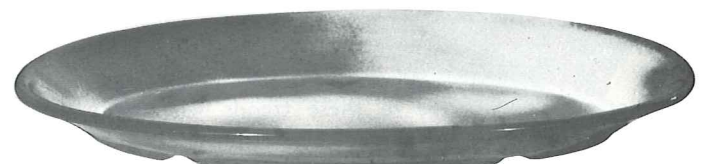
*6N—1 QT. BOWL—2.50



5P—17" DEEP PLATTER—10.00 *5Q—13" DEEP PLATTER—4.00



*5QD—13" DIVIDED BOWL—4.00



*TP—17" OVAL PLATTER—10.00

THIS PAGE AVAILABLE IN PRAIRIE GREEN, WOODLAND MOSS, AUTUMN YELLOW AND WHITE SAND EXCEPT WHERE NOTED

*AVAILABLE IN ALL COLORS

**AVAILABLE IN BLACK & FLAME ALSO. — ADD 50% FOR FLAME

SIZES ARE APPROXIMATE AND MAY VARY SLIGHTLY.